

## Typical use and application

Exocet Blue Dye is an oil soluble dye in liquid form. It can be used for the colouration of petroleum derived products including; mineral oils, lubricants, greases, aliphatic and aromatic hydrocarbon solvents and fuels. The product can be readily pumped, poured or metered directly from the container.

Due to the presence of aromatic solvent in this product, contact with natural rubber must be avoided. For seals and joints the use of PTFE, Viton or similar synthetic products is recommended.

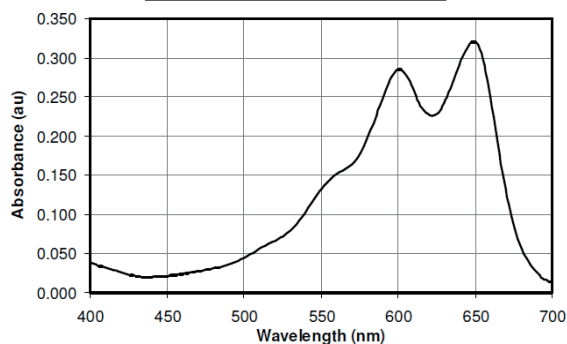
## Typical addition rate

This product is designed to be used at a dosage of 1kg to greater than 50,000L, or 20mg/L. Actual dosage will depend on the desired colour strength as well as the colour of the base oil.  
e.g. Fuels 5 to 20ppm, Lubricants 50 to 200ppm and Greases 500 to 2000ppm.

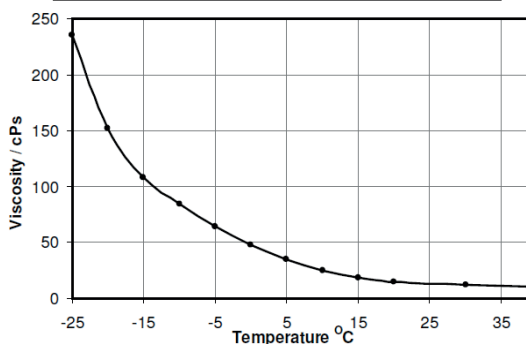
## Appearance

Exocet Blue Dye XO1922BD is a free-flowing dark blue liquid with a distinct aromatic odour. It is not miscible with water.

**SPECTRAL CURVE**



**TYPICAL VISCOSITY CURVE**



## Typical Properties

Parameter	Method	Range	Typical
Density @ 15°C (g/cm <sup>3</sup> )	IP 160 / ASTM D1298	0.9 - 1.1	0.97
Flash Point (°C)	IP 34 / ASTM D93	>61	65
Temperature of crystallisation (°C)	-	< -25	
Viscosity @ 20°C (cPs)	Brookfield	<45	15

## Packaging

Available in sizes from 50ml bottle to 1000L IBC



T : +44 (0)1743 761415  
F : +44 (0)1743 761075  
E : sales@fastexocet.co.uk

Fuel Additive Science Technologies Ltd  
Unit 29 Atcham Business Park, Upton Magna,  
Shrewsbury, Shropshire, SY4 4UG